

# New Park on Glengarry Avenue

Design and Development

Virtual Public Meeting

March 24, 2021



# Land Acknowledgement

I'd like to begin by honouring the land that I'm on. If you are not currently in Toronto, I encourage you to learn about the lands you're on.

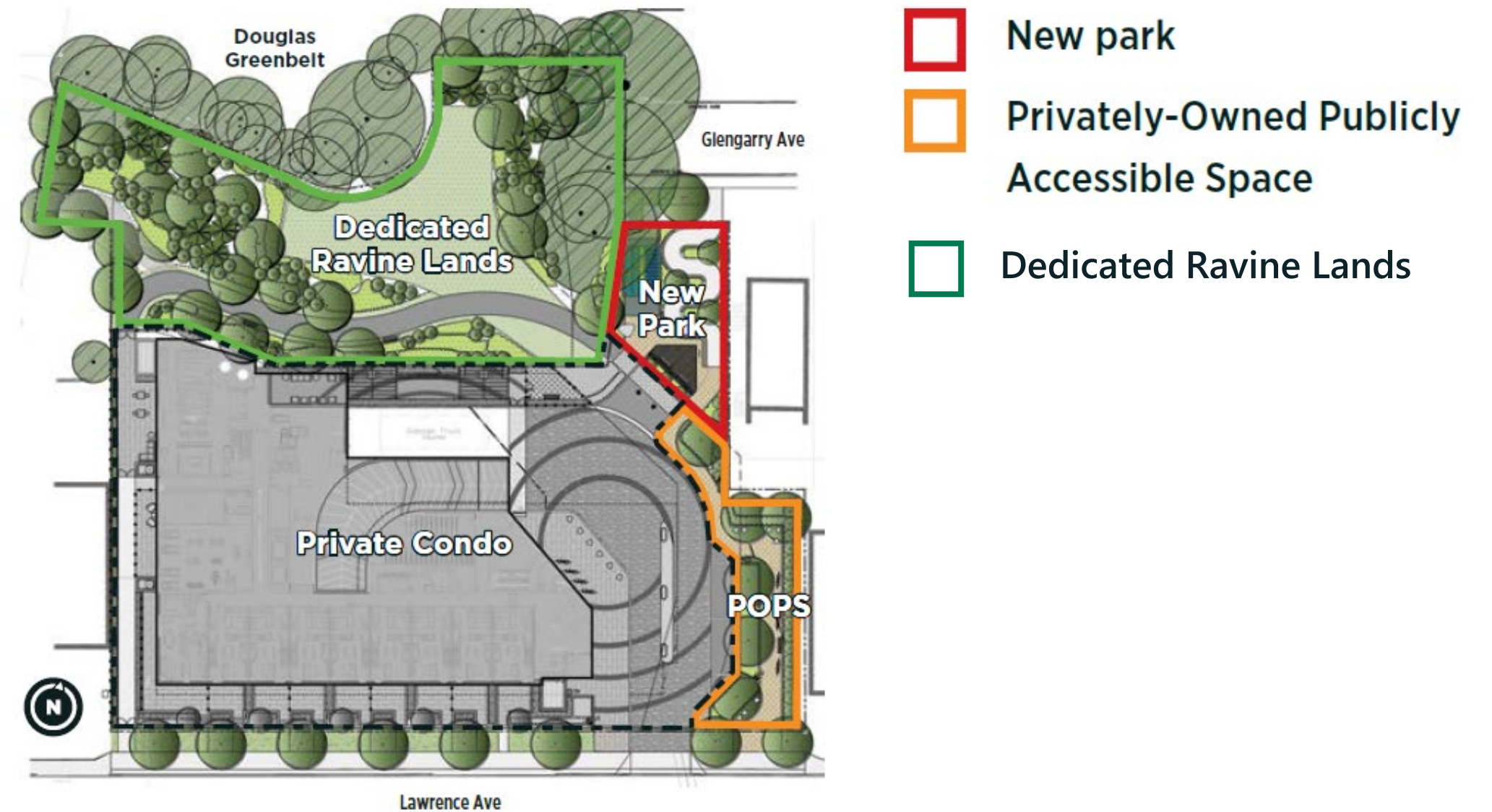
We acknowledge the land we are meeting on is the traditional territory of many nations including the Mississaugas of the Credit, the Anishnabeg, the Chippewa, the Haudenosaunee and the Wendat peoples and is now home to many diverse First Nations, Inuit and Métis peoples. We also acknowledge that Toronto is covered by Treaty 13 with the Mississaugas of the Credit.



# Objective of Tonight's Meeting

A new park is being designed on Glengarry Avenue, east of Avenue Road and directly adjacent to the Douglas Greenbelt!

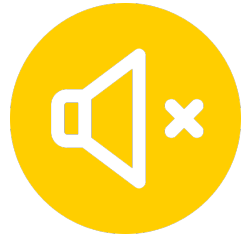
Tonight we will present and gather feedback on the **early concept design for the new park** that was informed by previous community and stakeholder feedback.



An aerial overview of the surrounding community and the location of the new park on Glengarry Avenue.



# Tips of Engagement for a Successful Virtual Meeting



**All participants have been muted** for this meeting.



All cameras have been **turned off** for this meeting.



**Use the chat feature to ask questions.** Or click the hand icon, beside your name from the participants list on the right.



**Computer audio issues?** Use your cell-phone for audio by calling 416-915-6530 and enter meeting number 133 848 4397. Press \*3 to ask a question.



You will be given an opportunity to **ask panelists questions directly** during the Q&A.



# Agenda



Welcome, Opening Remarks and Team Introductions



Community Engagement



Park Project Overview



Concept Design



Design Feedback and Discussion

thank  
you!

Next Steps + Adjourn



# Project Team

## CITY OF TORONTO

---

### Parks, Forestry and Recreation

#### Jessica Chan

PFR Parks Development  
Senior Project Coordinator

#### Rajesh Sankat

PFR Capital Projects  
Senior Public Consultation  
Coordinator

#### Vivian Goulas

PFR Capital Projects  
Support Assistant

#### Lisa Ryan

General Supervisor, Parks

#### Gianluca M Di Cintio

General Supervisor, Parks



## DESIGN TEAM

---

### Strybos Barron King (SBK)

#### Bryn Barron

Principal Landscape Architect

#### Sydney Martel

Landscape Architect

## DEVELOPER

---

### Graywood Group

#### Neil Pattison

SVP Development

#### Christine Chea

Manager, Development



## Councillor Mike Colle

City of Toronto, Ward 8  
Eglinton-Lawrence



# Community Engagement

## Consultation + Communications Update

Rajesh Sankat, City of Toronto



# Anticipated Project Timeline



WE ARE HERE



- Virtual Community Meeting on March 25, 2021
- **Online Survey to collect extended design feedback open from March 24<sup>th</sup> to April 11<sup>th</sup>**

- Refined concept designs will be posted later this spring!
- A **second online survey** will be available to collect additional feedback from community members

- New park construction anticipated to coincide with new development at 250 Lawrence Avenue West

# Community Outreach




**A new park is coming to Glengarry Avenue!**  
Attend the public meeting and share your thoughts in an online survey.

The City of Toronto invites you to learn more about the new park being designed Glengarry Avenue, east of Avenue Road and directly adjacent to the Douglas Greenbelt.

Early concept design options have been developed for this new park, and staff are hosting a virtual public meeting to:

- Provide a project update
- Present the concept design options
- Share community perspectives

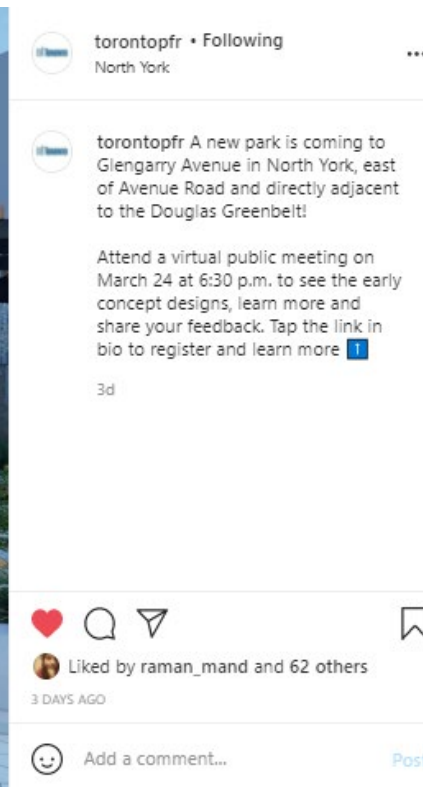
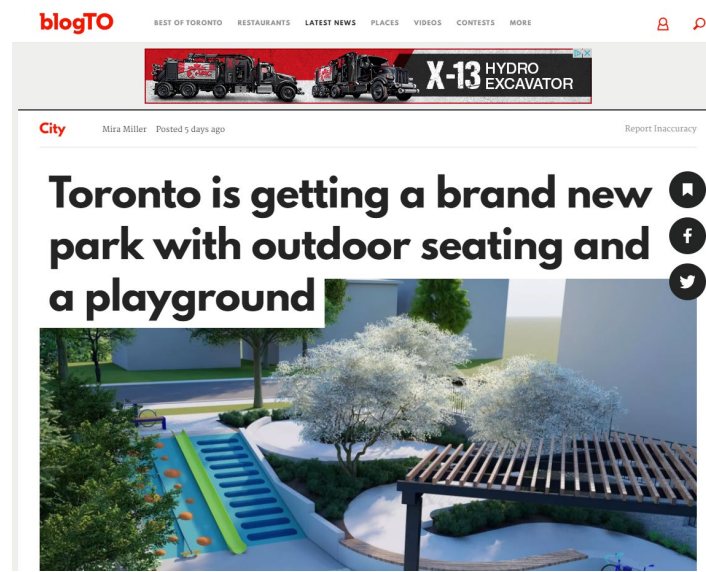
## Meeting details

 **Wednesday, March 24, 2021**  
6:30 to 8:00 p.m.

This meeting will be accessible online.



To register for the meeting, visit [toronto.ca/glengarry-park](https://toronto.ca/glengarry-park) or scan the QR code. Join the online meeting so you are ready on time.



**Community mail outs and social media posts advertising tonight's Virtual Public Meeting and Online Survey.**



## February and March 2021

- Project webpage at [toronto.ca/GlengarryPark](https://toronto.ca/GlengarryPark)
- Community postcards and digital eFlyers sent out to current and future residents, community groups and Councillor's Office notifying them of the upcoming virtual public meeting and online survey

## March 24<sup>th</sup>, 2021

Virtual Public Information Meeting hosted by PFR



## March 24<sup>th</sup> to April 11<sup>th</sup>

Online Survey for input on proposed concept design

## April 2021

Meeting and Survey summary posted on project webpage

## April to May 2021

Final designs posted on project webpage + Second online survey for additional feedback!

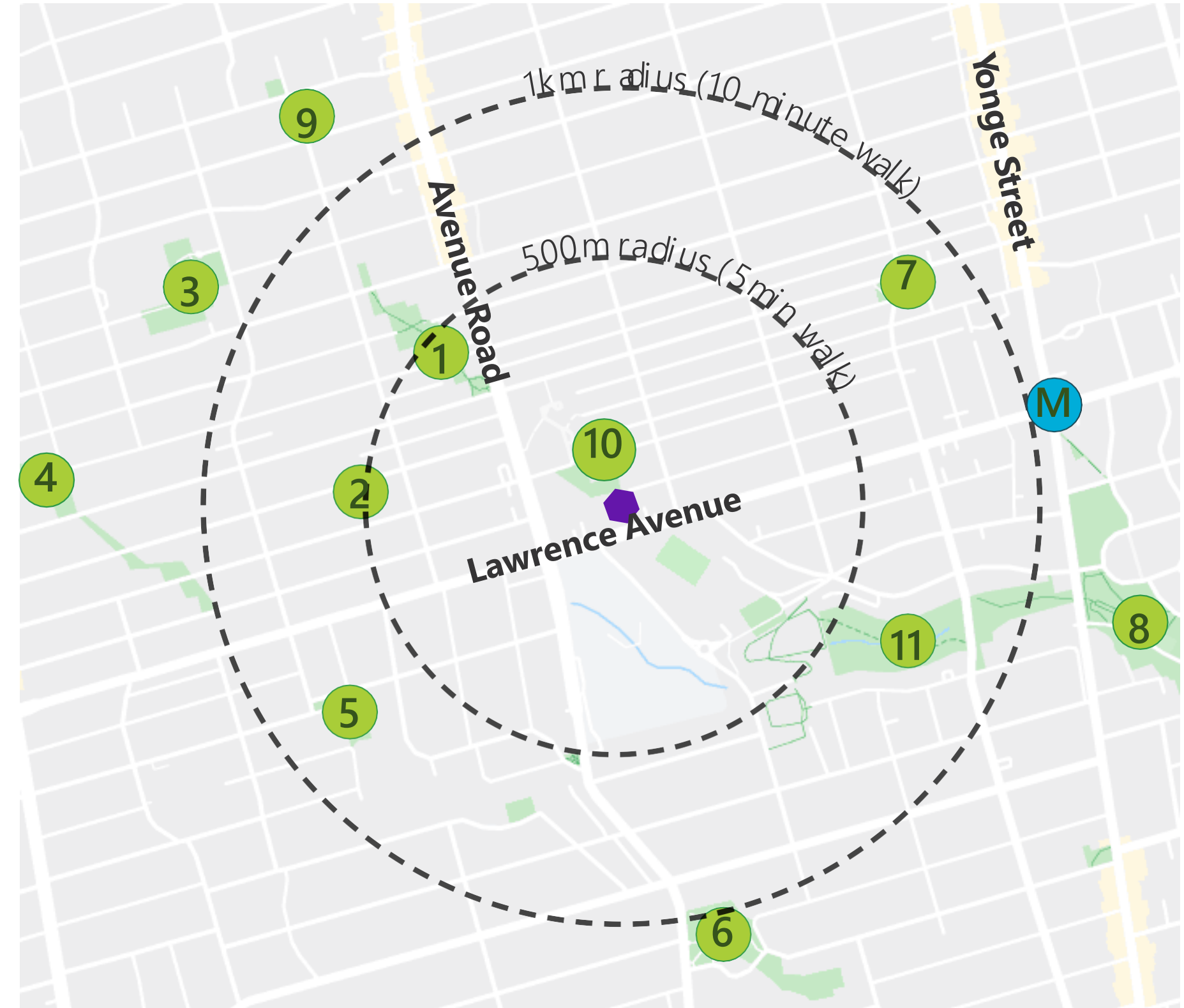
# Park Project Overview

## Context and Masterplan




Jessica Chan, City of Toronto PFR

## Parks in Proximity

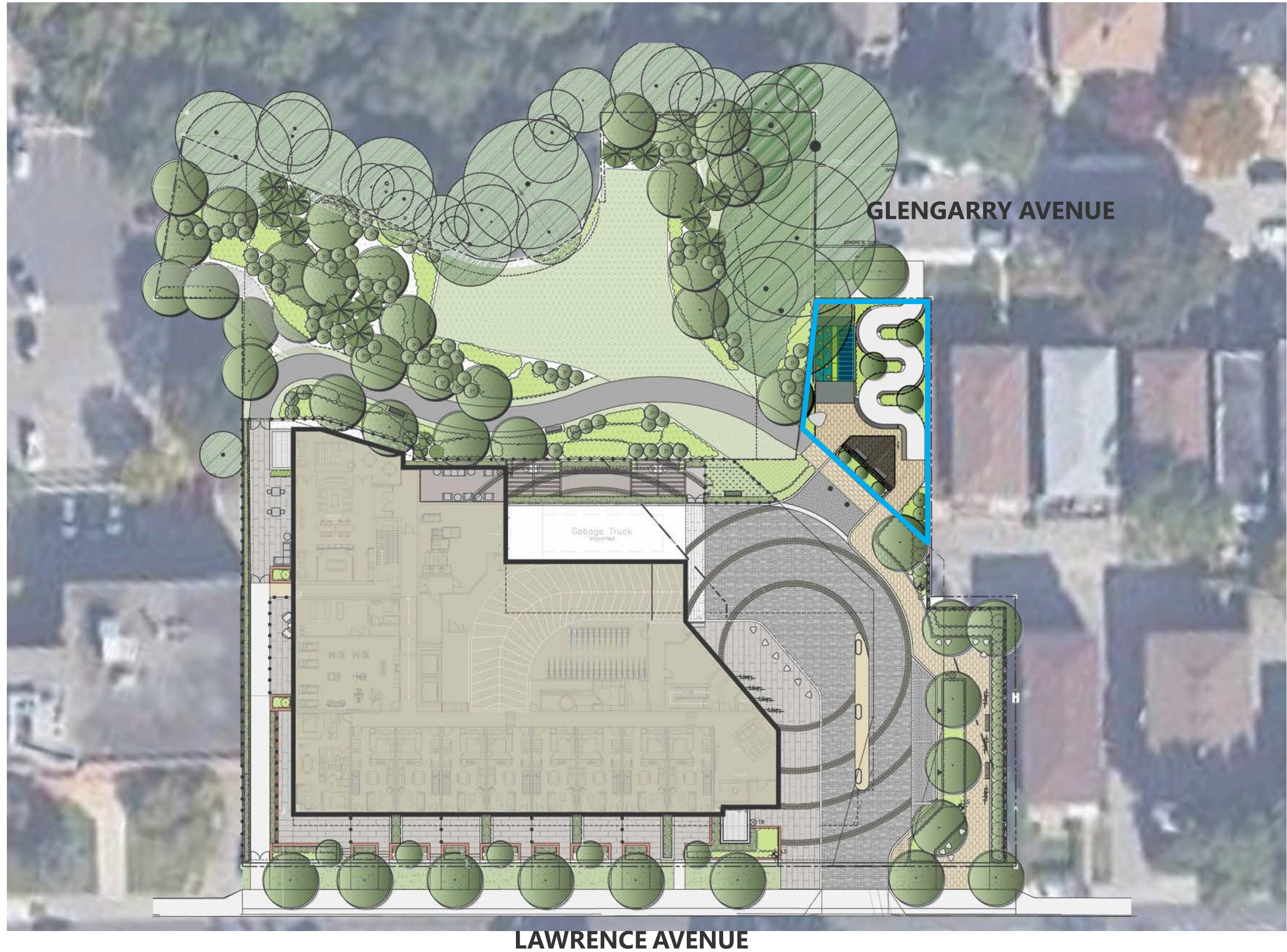
- 1 Brookdale Park  
-Playground, horticultural display
- 2 Bedford Parkette  
-Playground, horticultural display
- 3 Ledbury Park  
-Outdoor rink, horticultural display
- 4 Woburn Park  
-Dog Off Leash Area, outdoor basketball court, 2 playgrounds, horticultural display
- 5 Phil Givens Park  
-Playground
- 6 Lytton Park  
-2 Bowling Greens, 3 tennis courts, playground, horticultural display
- 7 Woburn Avenue Park  
-Playground, wading pool, horticultural display
- 8 Lawrence Park Ravine  
-2 bowling greens, 2 picnic shelters, 3 tennis courts, outdoor fitness, playground, horticultural display
- 9 Old Orchard Park  
-Playground
- 10 Douglas Greenbelt
- 11 Chatsworth Ravine



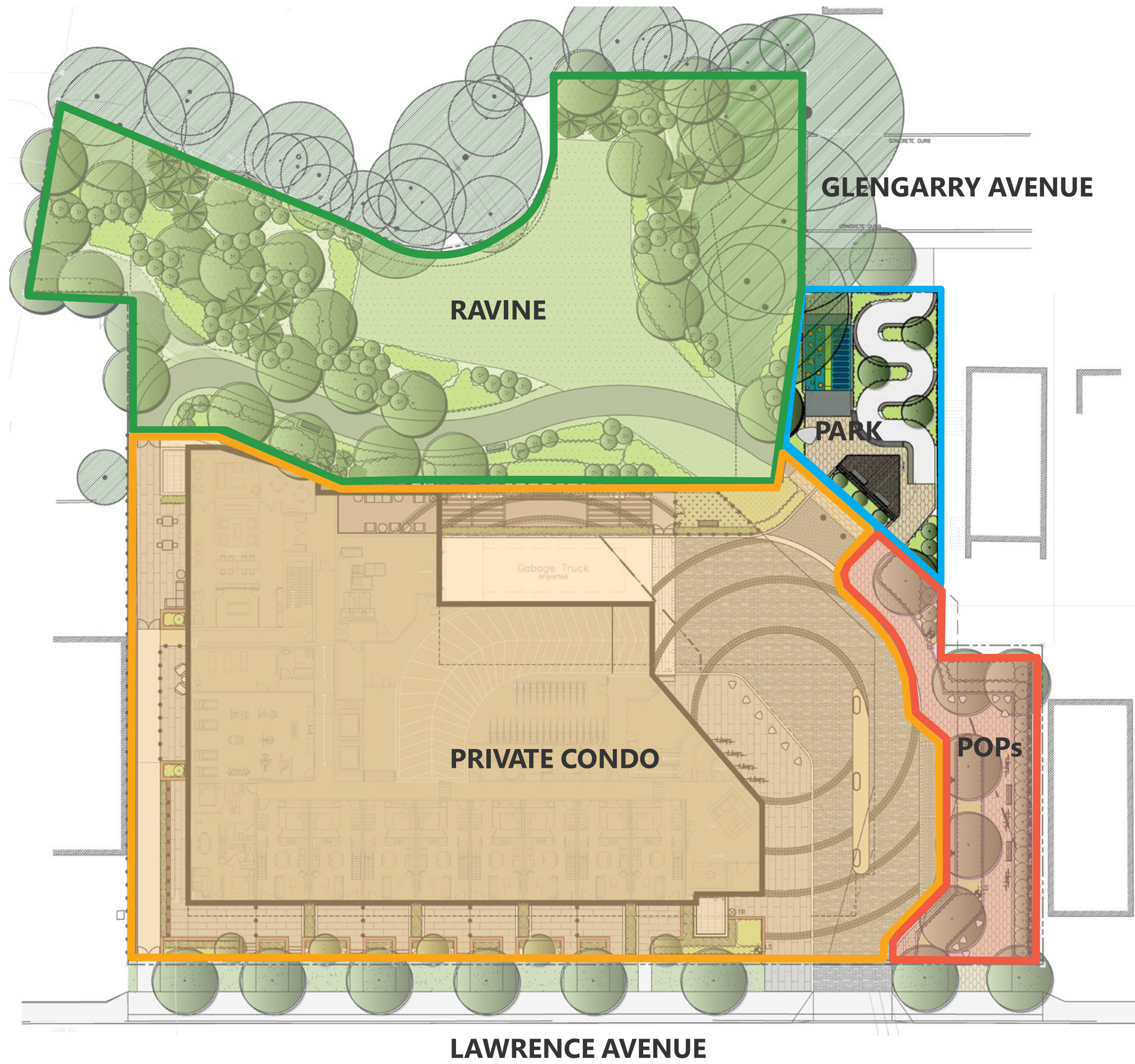
### Legend:

-  **TTC: Lawrence Station**
-  **Park**
-  **Park location**

# Approved Landscape Plan



# Approved Public and Private Zones



# How will this park be delivered?

## What are developer-delivered parks?



A developer-delivered park is a commitment by the developer to jointly/mutually design and construct their parkland dedication with City of Toronto Parks, Forestry and Recreation Division to coincide with the build out of their development.

Parkland dedications are obtained through development applications, which are built to coincide/in time with the build out of the development

## How are developer-delivered parks funded?



Developer-delivered parks are funded through the Parks & Recreation component of the Development Development Charges, funding through a Section 37 agreement, through donations, partnerships, or a combination of the above

## How are they maintained?



Developer-delivered parks are either maintained by the City's Parks Operations and Maintenance Branch, or by the land owner/condominium corporation. The new park on Glengarry Avenue will be maintained by the City's Parks Operations and Maintenance Branch.

# Park Concept Design

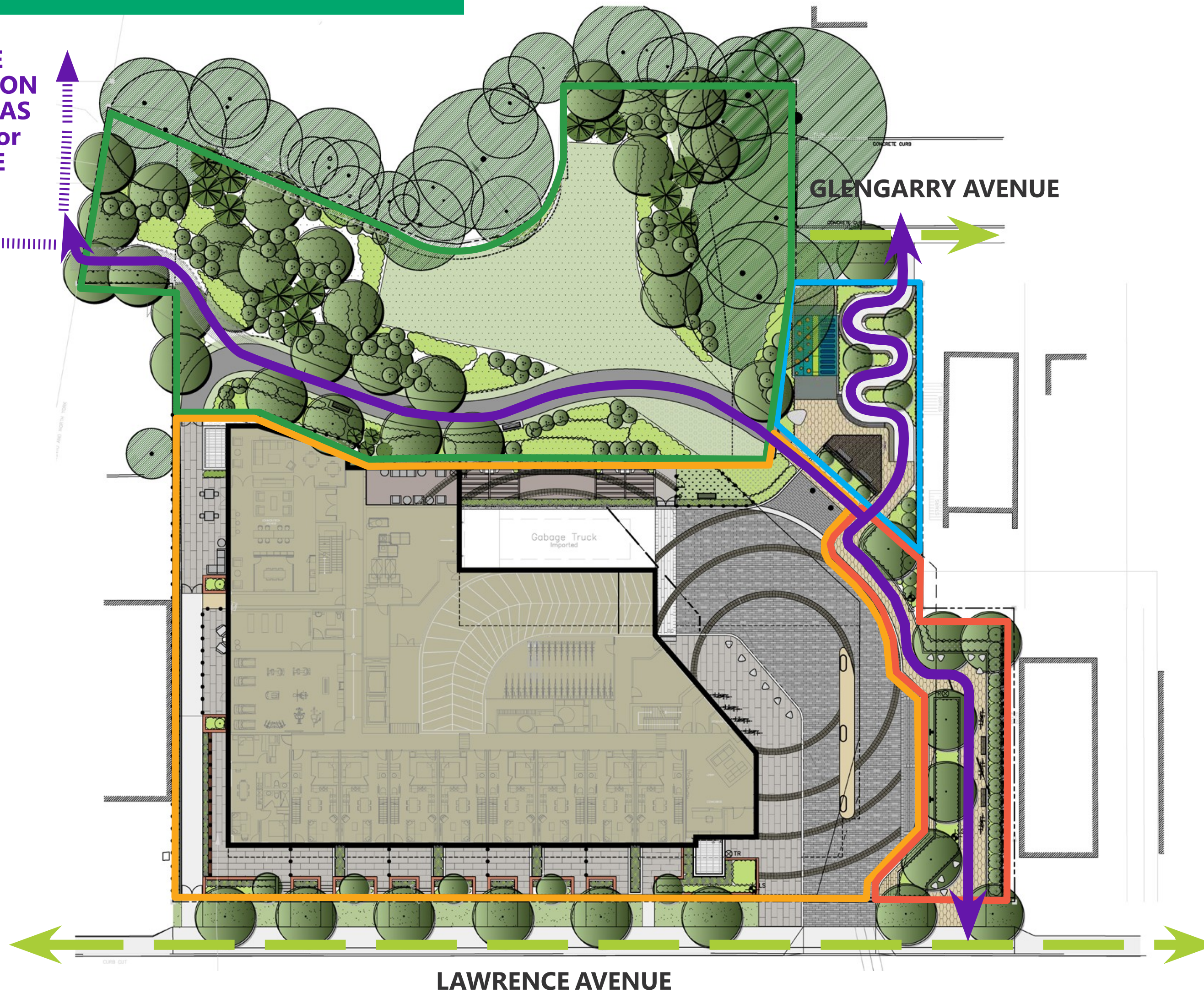
## Details + Themes

Bryn Barron, Principal Landscape Architect (SBK)



# Pedestrian Circulation Plan

FUTURE CONNECTION TO DOUGLAS AVENUE or AVENUE ROAD



# Privately Owned Public Space (POPS)



BENCH



BIKE PARKING



CONCRETE SEATING



PAVING PATTERN



PLANTING



PLANTING



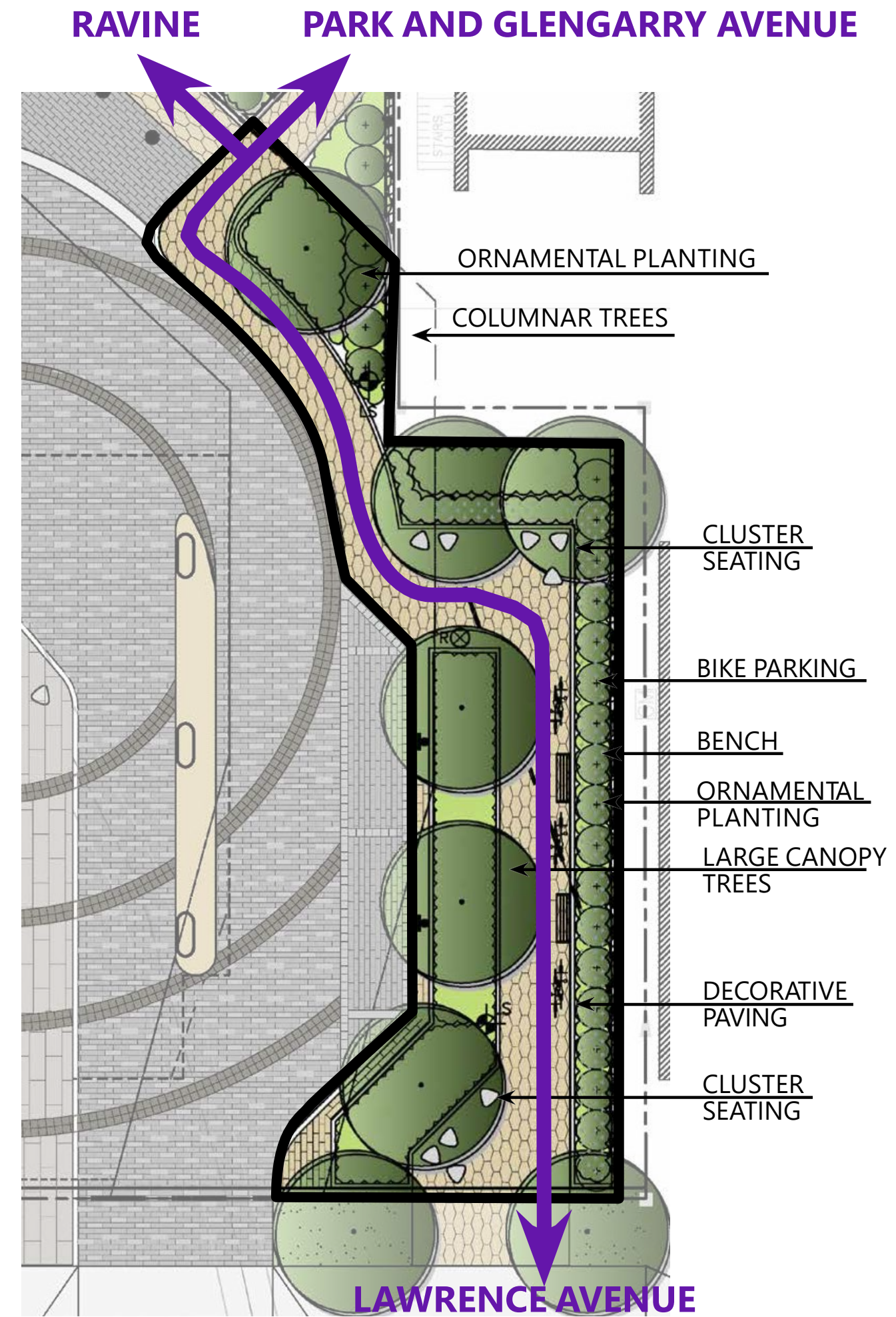
COLUMNAR TREES



VIEW FROM SOUTH



VIEW FROM WEST

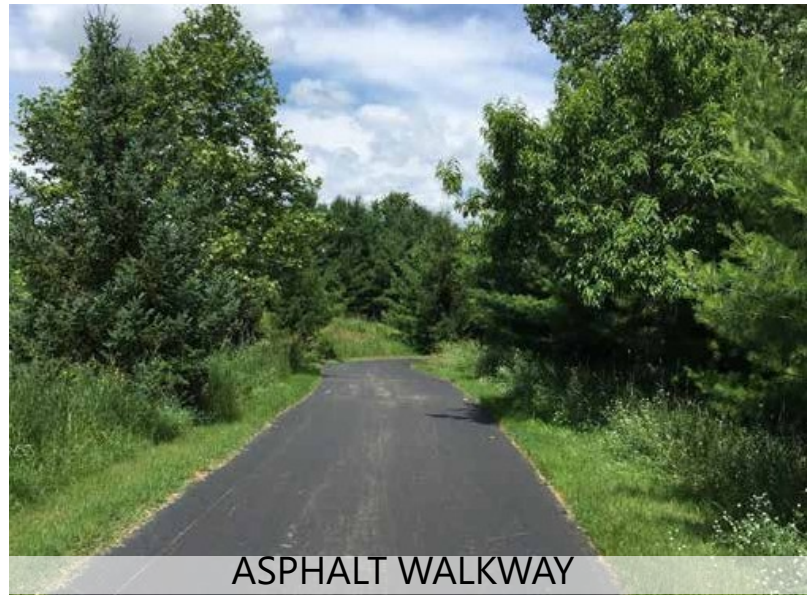


Approved Plan

Images

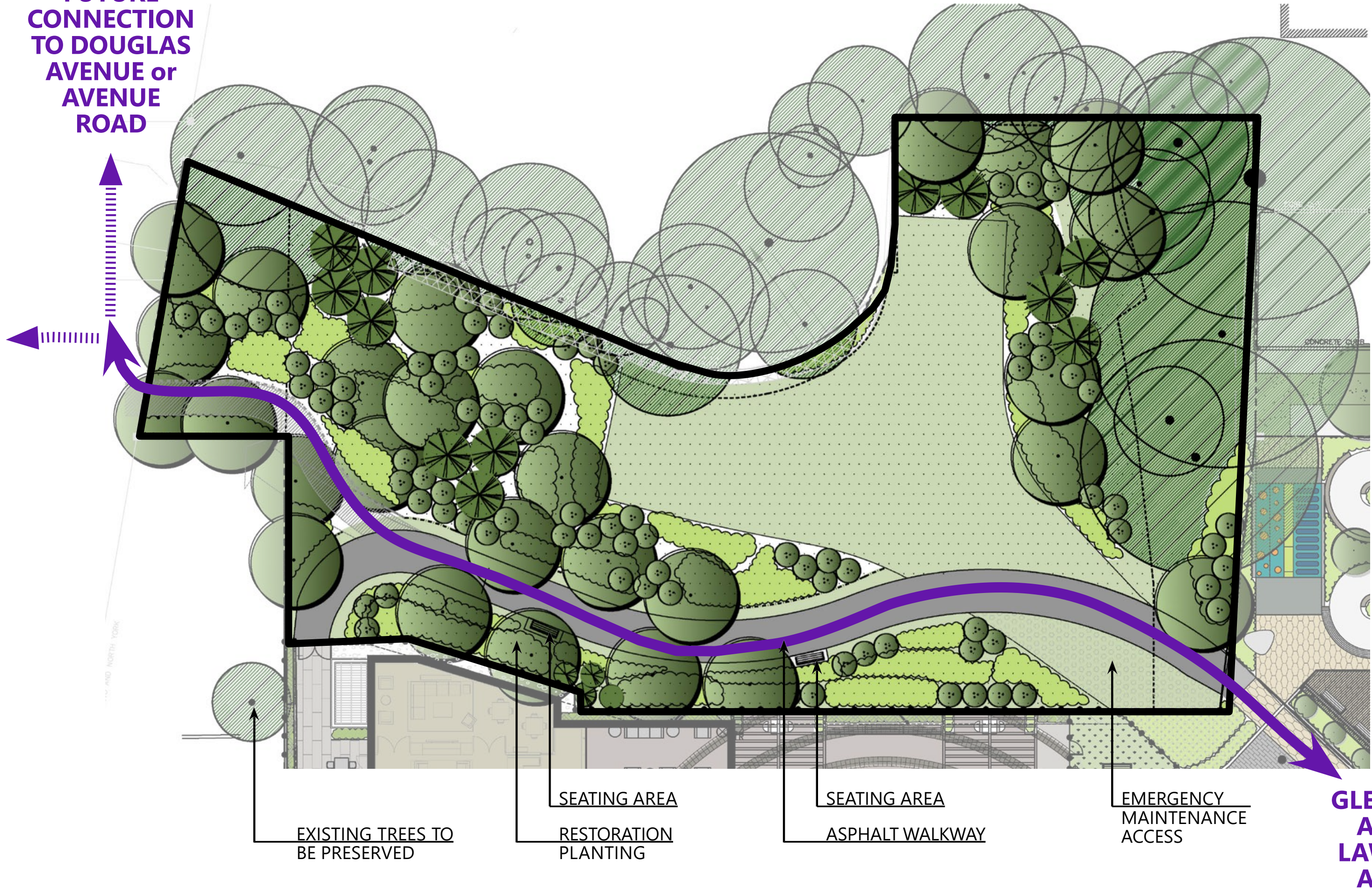
Rendering

# Ravine



Images

FUTURE CONNECTION TO DOUGLAS AVENUE or AVENUE ROAD



PARK GLENGARRY AVENUE LAWRENCE AVENUE

Approved Plan

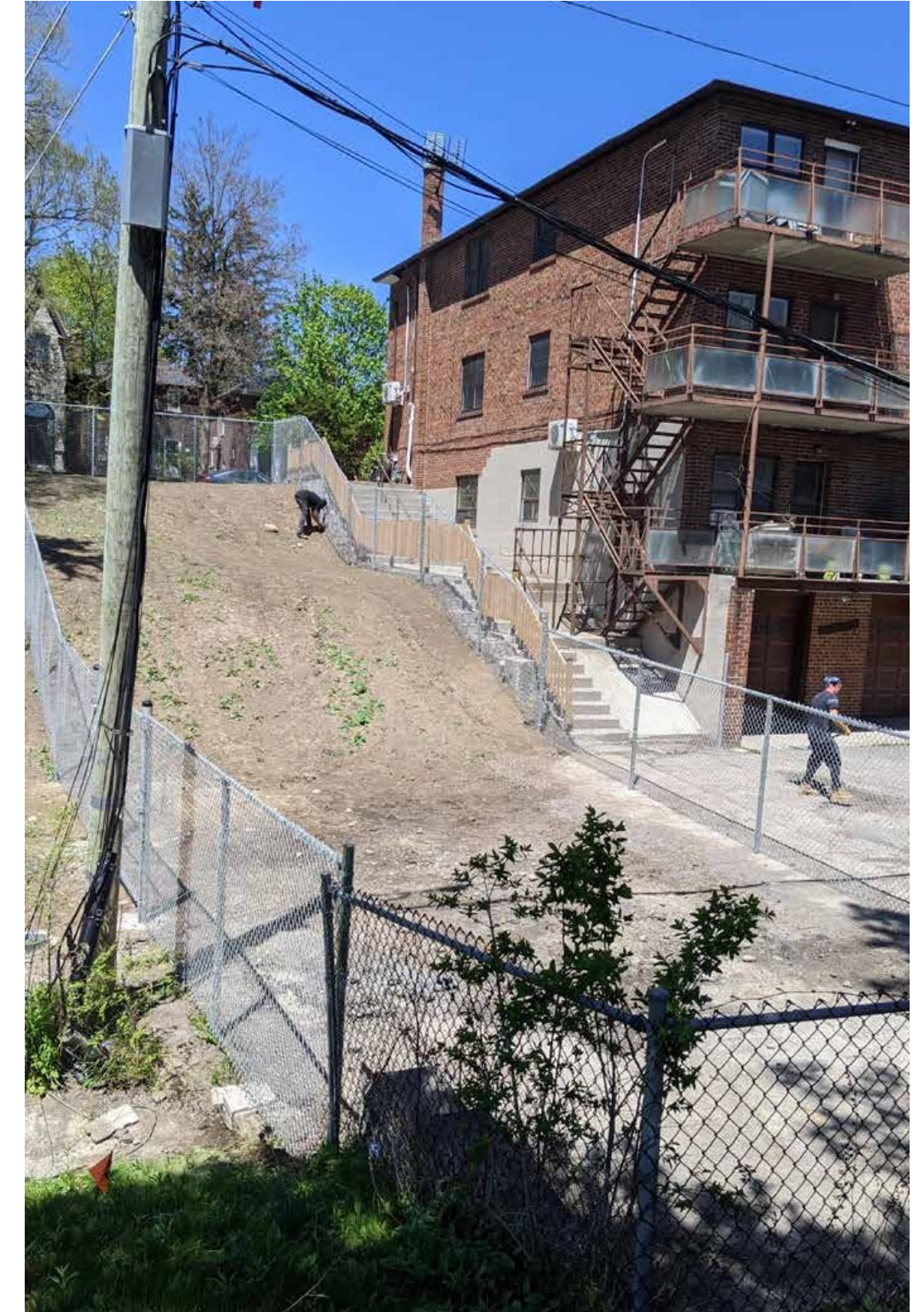
# Park: Existing Conditions, Opportunities and Constraints

## Existing Conditions & Constraints

- Steep slope
- Existing trees in ravine to be preserved
- Accessible walkway required

## Opportunities

- Create new north-south pedestrian connection (Glengarry Avenue to Lawrence Avenue)
- Create connection to future ravine pathway network
- Create community gathering space and play area
- Use slope to create unique play experience




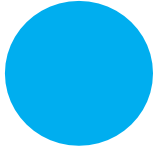




Existing Photos

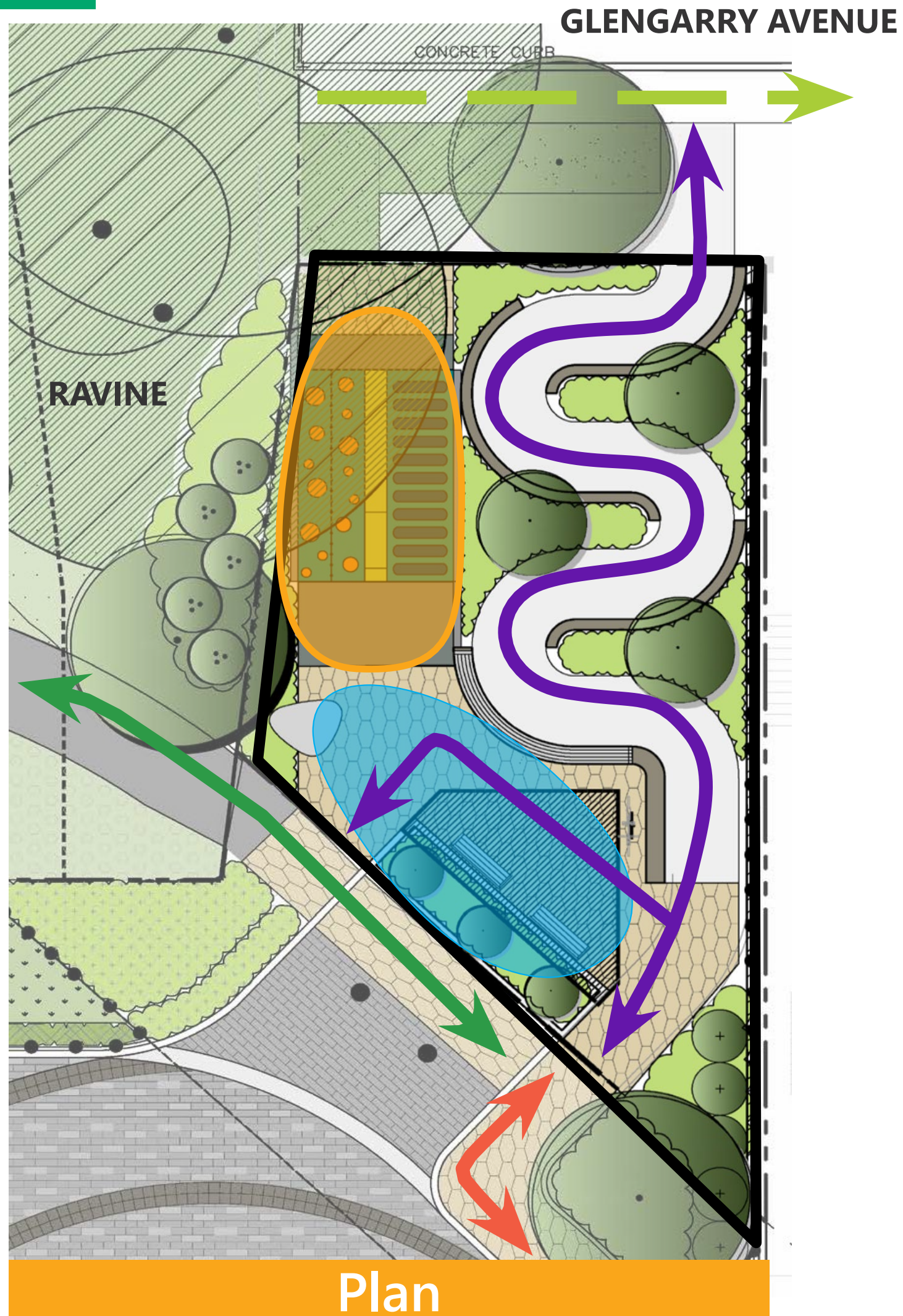
# Park Concept

Bryn Barron, President, Strybos Barron King

# Functional Zone Diagram

Legend:

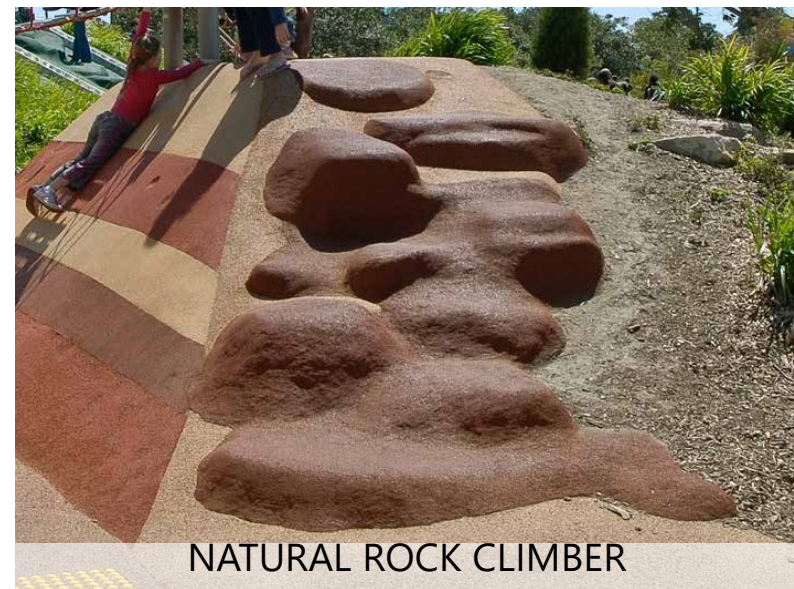
-  Play zone
-  Gathering space
-  Glengarry Avenue sidewalk
-  Internal walkway
-  POPs connection to Lawrence Avenue
-  Ravine connection/ future connection to Douglas Avenue or Avenue Road



# Concept Plan- Play Components



ROPE CLIMBER



NATURAL ROCK CLIMBER



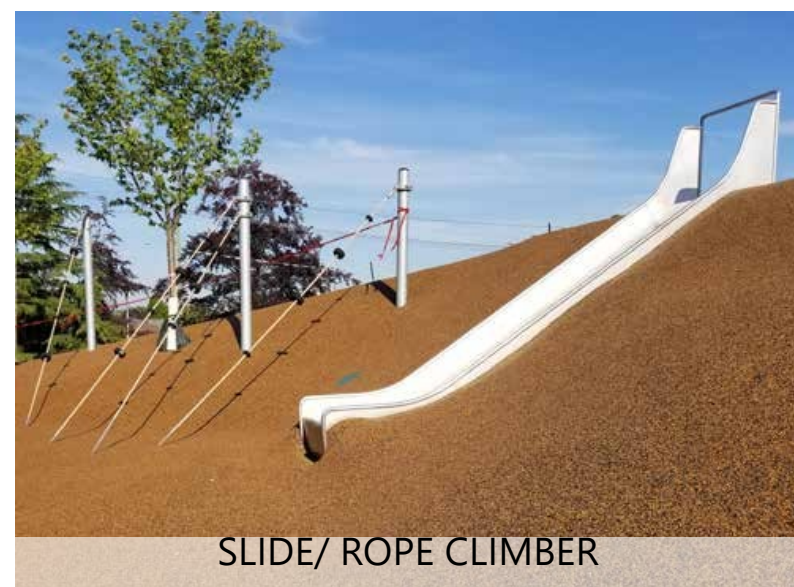
ROCK CLIMBER



CLIMBER/ OBSTACLE COURSE

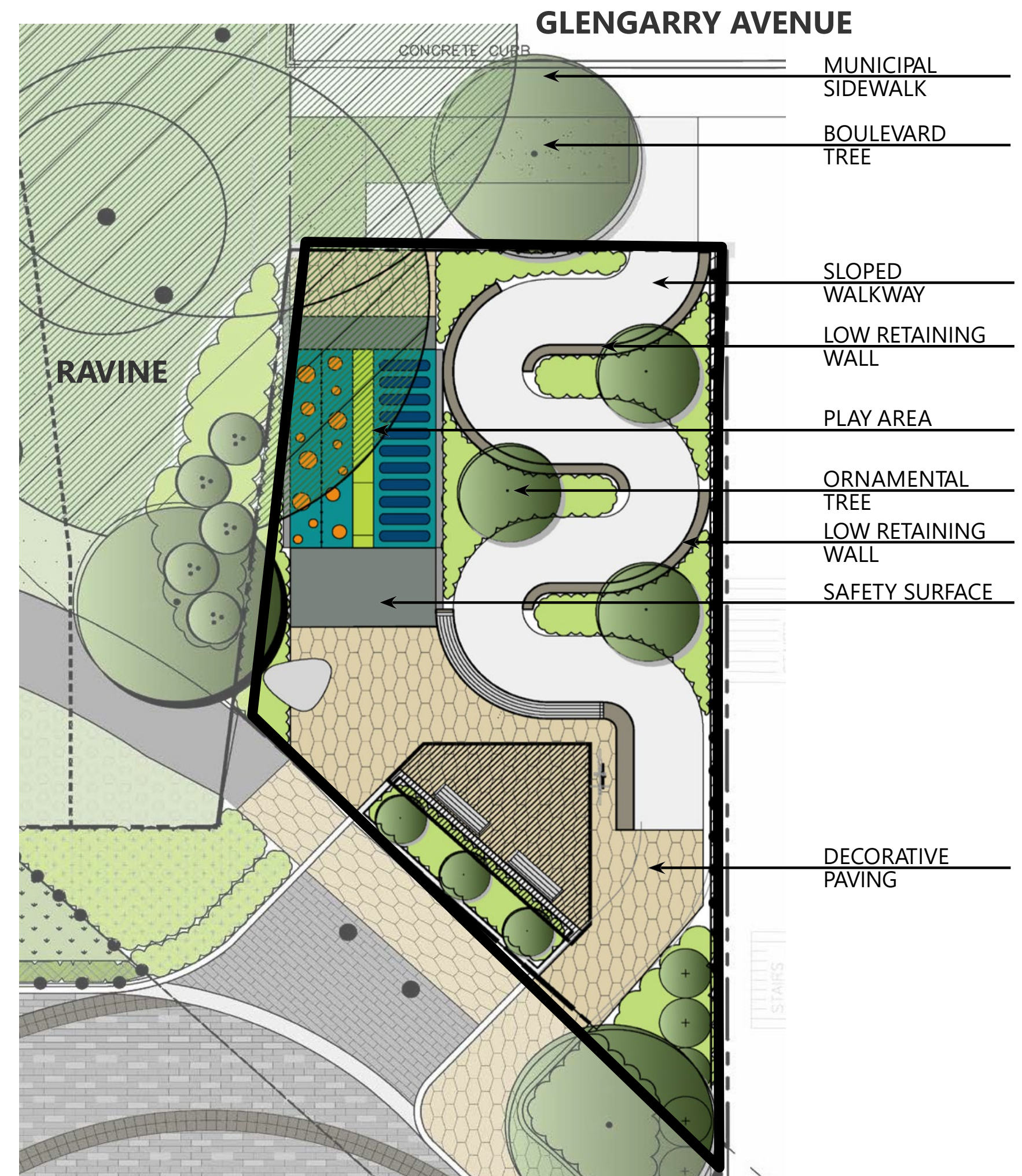


SLIDE/ OBSTACLE COURSE



SLIDE/ ROPE CLIMBER

## Potential Play Components- Images



Plan

# Concept Plan- Gathering Area



ORNAMENTAL TREE



PLANTING



SEATWALL



SHADE STRUCTURE OPTIONS

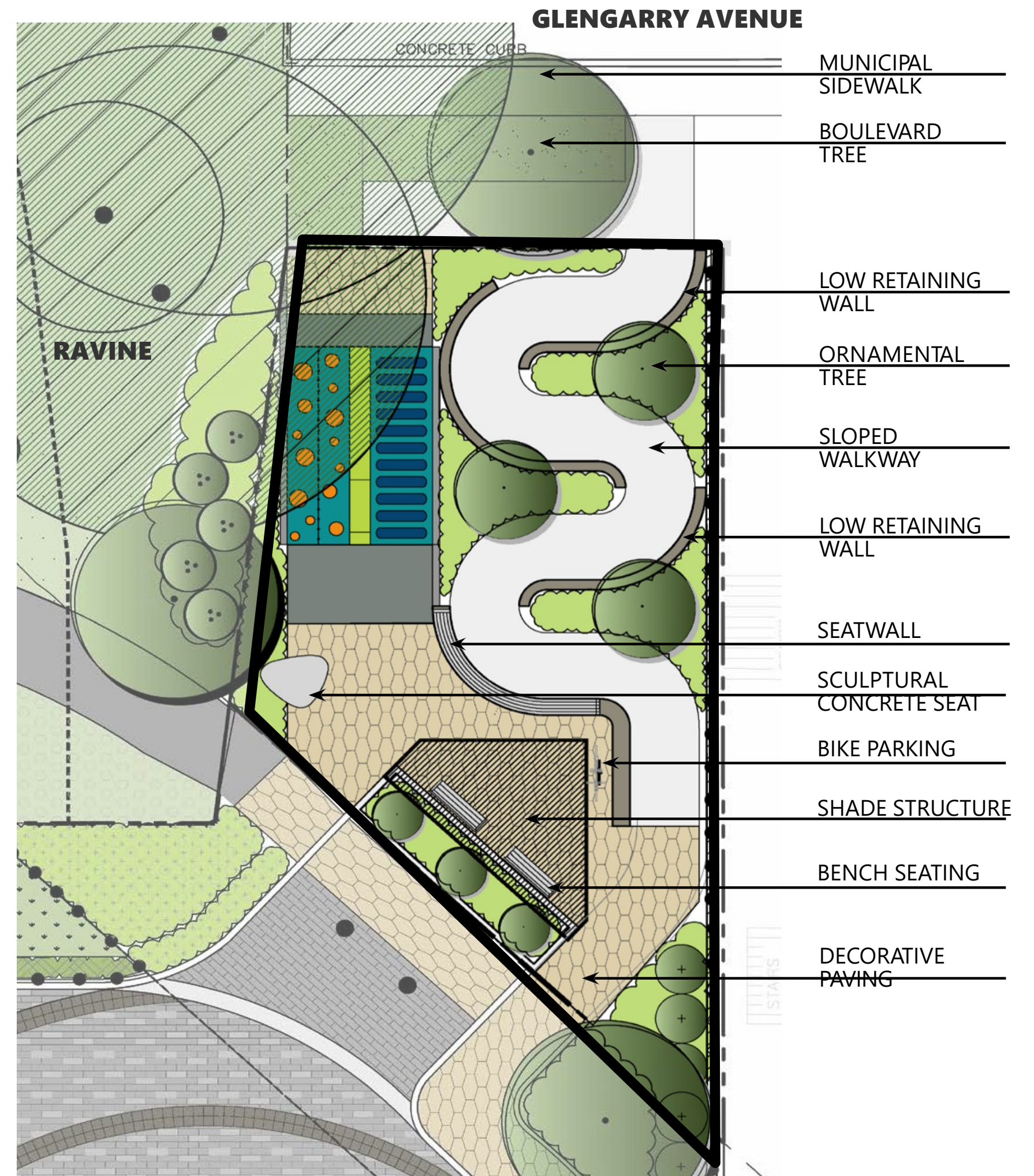


SCULPTURAL CONCRETE SEAT



BENCH

## Potential Site Elements- Images



Plan



# Renderings



**VIEW A: View of play area and gathering space from south-west corner.**



**VIEW B: Aerial perspective from south-east corner showing connection to ravine.**

# Renderings

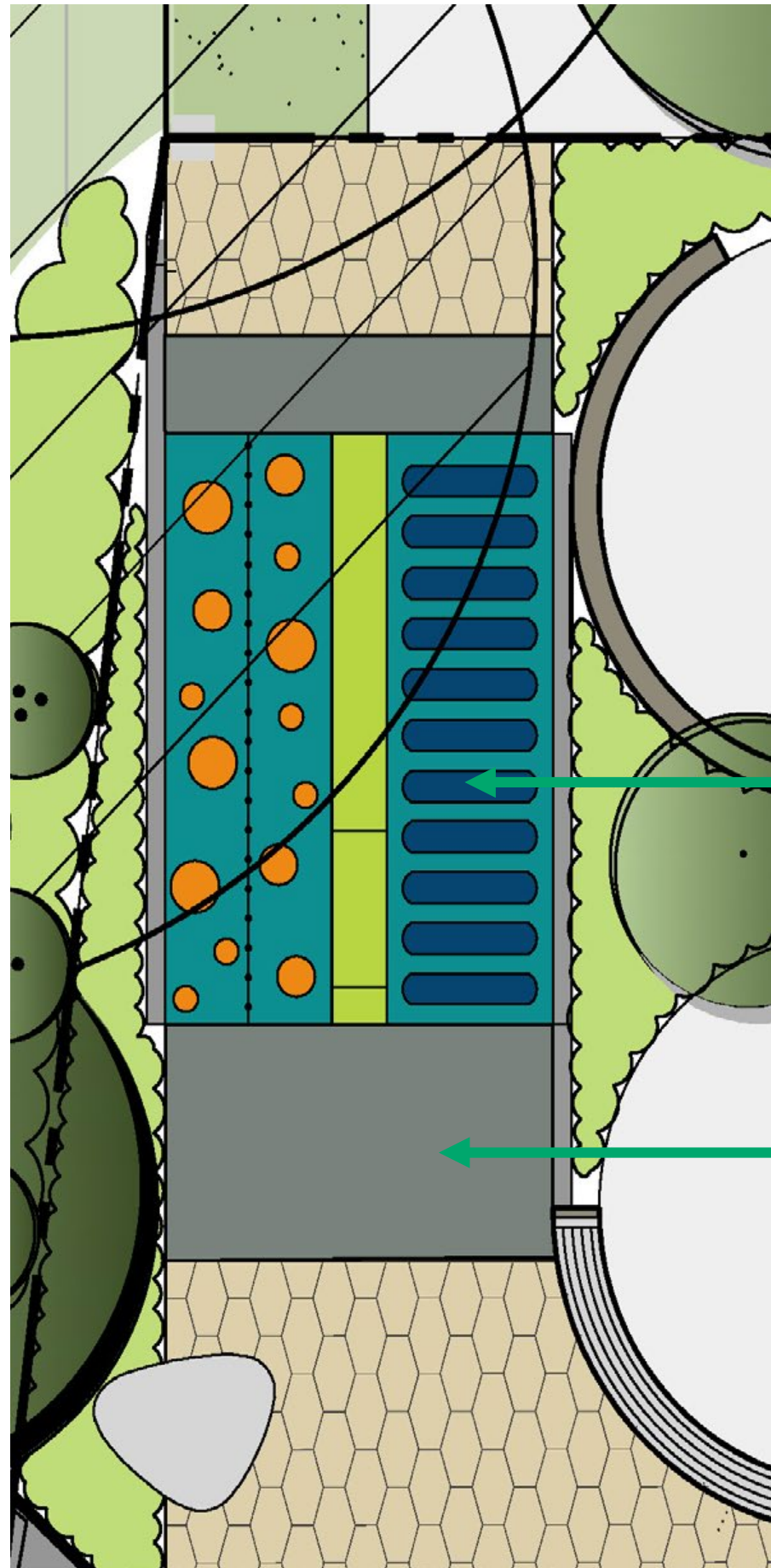


**VIEW C: View of play area and gathering space from north-west corner.**



**VIEW D: View of gathering space and sloped walkway from POPs entrance.**

# Children's Play Equipment



Play area

Safety surface



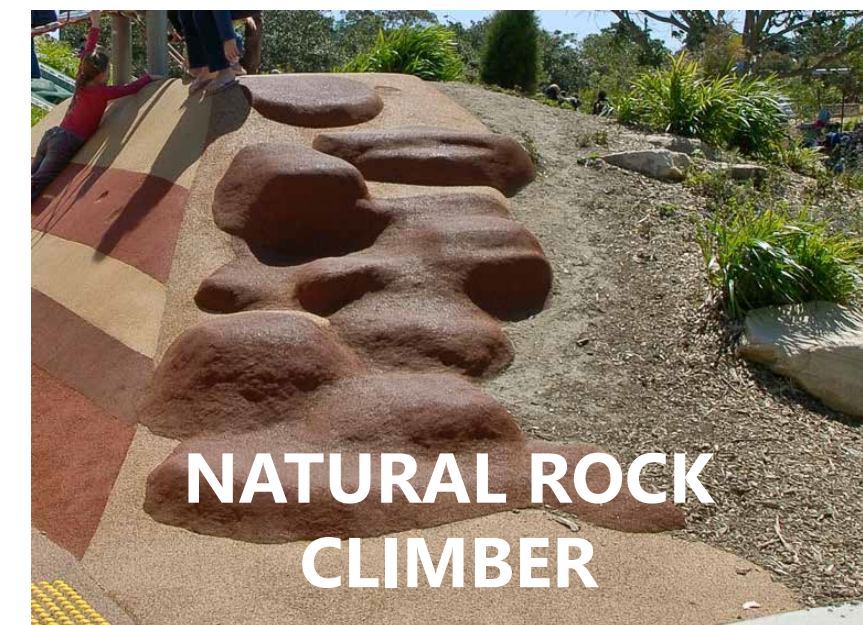
ROCK CLIMBER



ROPE CLIMBER



SLIDE/ROPE CLIMBER



NATURAL ROCK CLIMBER



CLIMBER/OBSTACLE COURSE



SLIDE/OBSTACLE COURSE

# Play equipment colours

VIBRANT – Option 1



NEUTRAL – Option 2



SPRING – Option 3



# Q&A

## Design Feedback



## We want to hear your input!

- 1. Does the design feel welcoming and safe for all park users? What could improve it?**
- 2. Do you have any comments about the circulation, pathways, or flexible spaces?**
- 3. Do you have any comments about the balance of plantings and green, versus paving and hard surfaces?**

Do you  
have any  
questions of  
clarification?

# Next Steps

Visit the project webpage at [www.toronto.ca/GlengarryPark](http://www.toronto.ca/GlengarryPark) to:

- Share your feedback through the **online survey available now to Sunday, April 11th!**
- Sign up for **e-updates** to stay informed!
- Access **this presentation online**, and a consultation summary in April.
- See the **refined concept design** and take the second online survey later this spring!

# Post-Meeting Feedback

**For further comments, contact:**

**Rajesh Sankat**, Senior Public Consultation Coordinator  
PFR Capital Projects  
[rajesh.sankat@toronto.ca](mailto:rajesh.sankat@toronto.ca)  
416-726-5264

**Jessica Chan**, Senior Project Coordinator  
PFR Capital Projects  
[jessica.chan@toronto.ca](mailto:jessica.chan@toronto.ca)  
416-392-2687

**Thank you for spending your evening with us!**

